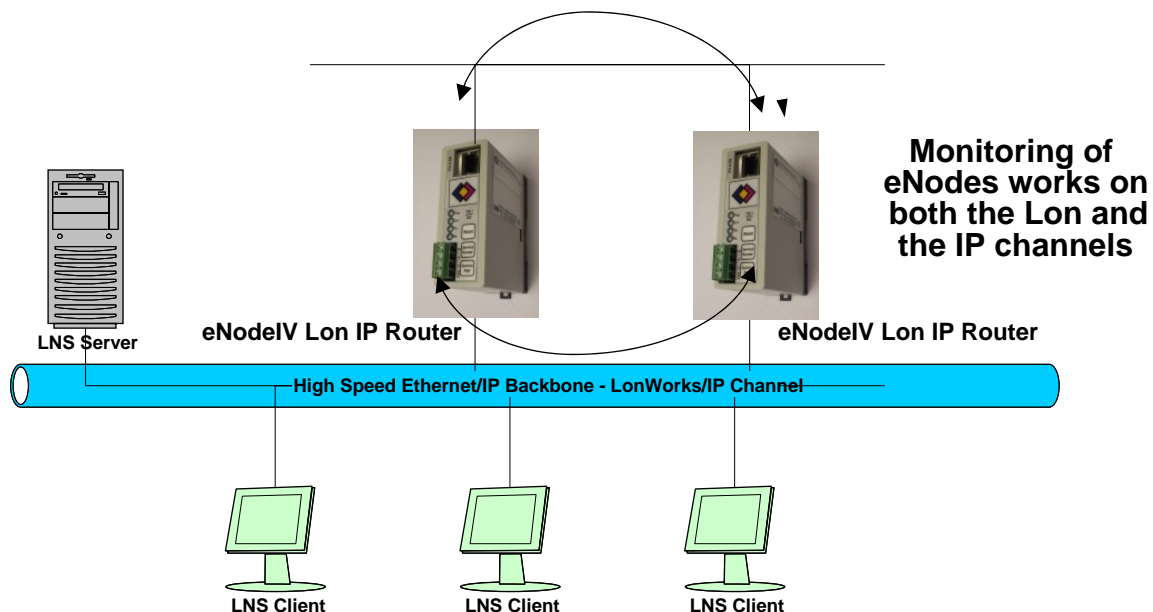




eNodeIV™ IP 852 Redundant Twin Mode

Control Network Solutions is pleased to announce new eNodeIV™ Lon IP 852 Router features for high availability applications. The Redundant Twin Mode feature allows two eNodeIV™ Lon IP 852 Routers to monitor each other for operational status. Only one router is active at any particular time, actually forwarding packets. Should an active unit fail; the previously inactive unit will begin forwarding network traffic.

All of this additional functionality is transparent to standard LonWorks network management tools and is configured via a simple web interface. For monitoring status of routers using conventional BMS/HMI software, a number of reporting features are provided that use Standard Network Variables.



For more details visit our web site www.cnsenode.com or Email Sales@cnsenode.com or call as below.